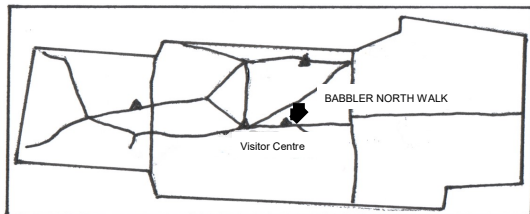
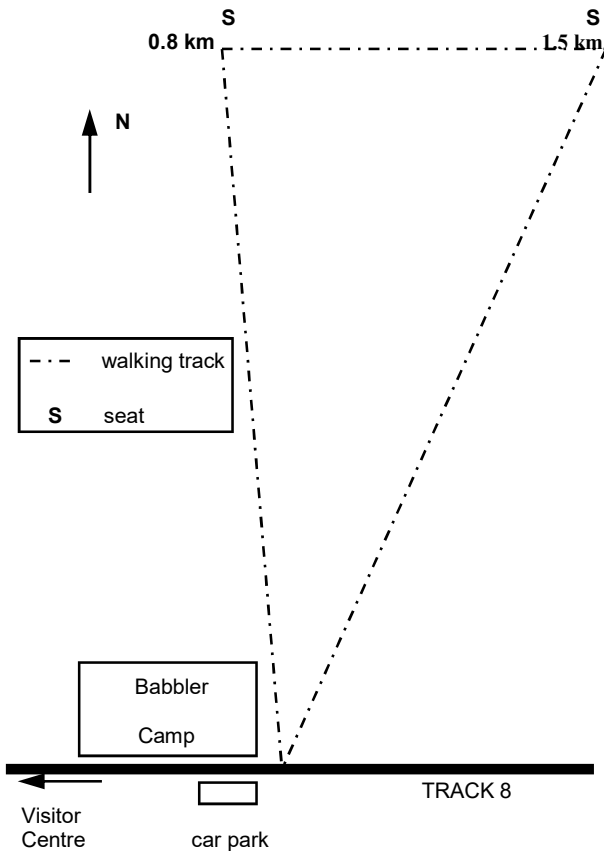


THE BABBLER CAMP NORTH WALK

Map NOT to Scale



THE ECHIDNA

“Spiny Anteaters”, or more correctly named Short-beaked Echidnas, are not often seen, but they leave many traces of their presence on Gluepot.

A group of holes dug in soil with a distinctive narrow cylindrical end, is clear evidence of one of these unique egg-laying mammals. Their cylindrical droppings full of ants may also be found in the area. Careful examination of soft soil may reveal their tracks.

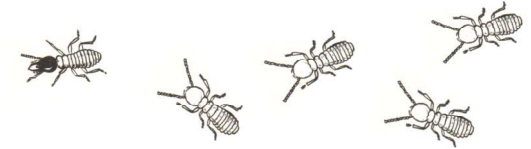


Echidna hind foot

The Echidna has a covering of sharp spines with fur in between. It has a narrow tubular snout and short powerful legs with sharp claws. These attributes suit them well to their lifestyle.



Echidnas are solitary animals that move about slowly searching for ants, termites or other invertebrates to eat. They dig into the soil or termite mounds and will tear rotting wood apart in search of this food. The food is then licked up with the long sticky tongue.



This foraging occurs mainly around dawn and dusk, as they tend to avoid extremes of temperature. If they are disturbed, they will curl into a ball, or if on soil, burrow down vertically leaving only the ends of their spines exposed.

When they are not foraging for food, Echidnas shelter in hollow logs, burrows or in piles of litter.

In the breeding season a single female may be followed around by several males. The single fertilized egg is carried in a pouch on the belly of the female and when the young hatches, it spends its first couple of months in this pouch. After this, the young one remains in a nest in a burrow and is fed by the female, until it is weaned at around 8 months of age.

Do you know what a young Echidna is called?

answer: a Puggle

Birdlife Australia Gluepot Reserve
 contact details:
gluepot@gluepot.org
www.gluepot.org
 08 8892 8600

WALK DETAILS

**2.7 km circuit 1 hour approx.
easy walking, some sand**

Note: Bicycles are not permitted on walking tracks

This walk commences from the opposite side of the road to the car park, near the eastern entrance to Babbler Campsite. Babbler Campsite is 3 km from the Visitor Centre along track 8.

The walk starts north of track 8 and heads north through Mallee with a Senna understorey. It then passes through a Casuarina woodland which has an understorey of Bluebush.

On the crest of a Mallee/Triodia ridge, the track turns east along the crest of the dune.

At 1.6 km the track turns sharply to the south-west back down into the Casuarina woodland. This area can contain many shallow pools of water after rain. Note the extensive areas of cryptogamic crust that hold the soil together. The walk returns to the starting point.

THIS WALK IS HABITAT FOR

Inland Thornbill, Hooded Robin,
Grey Shrike-thrush, White-browed Babbler,
Gilbert's Whistler, Jacky Winter,
Striated Grasswren, Shy Heathwren

IF YOU BECOME LOST ON THIS WALK
walk south to intercept track 8

THE RAIN MOTH

The Rain Moth (*Tricenta argentata*) is a large grey moth that appears after rain in Autumn. These adults have a very short life span and they do not feed at all. After emerging from their pupal case the adults mate and then the female flies about laying her thousands of fertilized eggs. She either lands on vegetation or drops the eggs like bombs as she flies over a suitable host plant.

From the eggs come small grubs which burrow into the soil below the host plant. These larvae spend from 5 to 7 years feeding on the bark around the roots of plants.

They then burrow to the soil surface and just below it they enter the pupa stage. Autumn rain sees the adult moth emerge. The reddish-brown pupal skins are left sticking out of the ground.

SAFETY GUIDELINES

A few simple precautions should always be taken when walking at Gluepot.

Dehydration is always a real risk

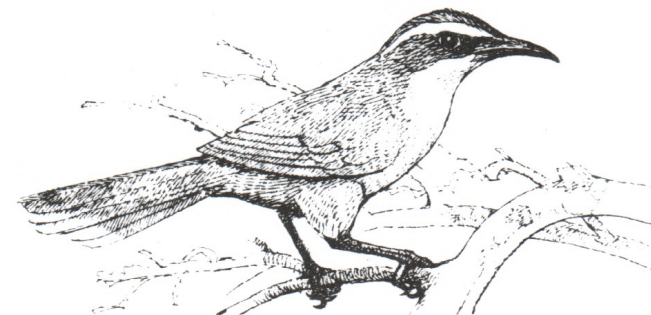
as the temperature can get extremely high (over 45° C), and humidity is normally very low.

- **Carry sufficient water**
- **Protect yourself from the sun**
- **If on a long walk take at least one piece of warm clothing**
- **Carry a compass & plan or map**
- **Carry a snake bite kit.**

W5
N

BABBLER CAMP NORTH WALK

Mallee/Triodia dune Casuarina woodland



White-browed Babbler *Pomatostomus superciliosus*

**GLUEPOT RESERVE
WALKING TRACK NETWORK**
SPONSORED BY



South Australian
Tourism Commission



Government
of South Australia