

THE BABBLER



News from Gluepot Reserve Autumn 2025

2025 Working Bee

The working bee was held from Friday 11th April until Monday 14th April.

There was a long list of projects to be undertaken, and most of these were completed.

A very big thank you to all who attended and pitched in.

As well as lots of hard work, there is always a very enjoyable social side to these working bees. This is made possible by our catering team led by Margaret Falkenberg and Anne Morphett. This is a big effort and they, and their helpers, did a wonderful job catering for about 40 people.

To have all meals provided, as well as morning and afternoon teas, means that there is much more time for relaxation and getting to know fellow workers. It provides the basis for a successful event.

The Projects that were completed were:-

Upgrade to the Grader shed. Enclosing the northern end of the grader shed including a sliding door and concrete apron and ramp. Thanks go to local contractor Steve Shaw and his team who carried out all the construction and technical work. They were ably assisted by participants and keeping up the cement supply was an amazing team effort.



Upgrade to the electrical supply to the squirrel shed. A new electrical cable was laid to allow lighting in the shed, and improve the power supply to the caravans. This project was supervised by Cain Electrical from Waikerie. There was a significant amount of trench digging and back filling that our volunteers assisted with.



Removing surplus pitfall buckets. This team managed to dig out 100 buckets. There are still 300 to go so it is a work in progress. Gradually the process improved as people learnt new ways of attacking the problem. We now have several very experienced people who can remove these buckets quite quickly.



Rethinking rubbish. The area behind the grader shed has been used as a storage area for various bits and pieces left over from previous projects. This material has been sorted and tidied and unwanted items were transported to the Sandy Dam area. From here it will soon be removed by Sims Metal and the Sandy Dam area can begin to be rehabilitated.



Upgrades to the electric fence. This is an ongoing project . Every year this group work tirelessly to advance the upgrades a few more kilometres.



Biodiversity study. A reptile and small mammal study was carried out in the Froggy Dam area. A total of 47 individual reptiles, representing 11 species, and 13 small mammals, all *Ningau yvonneae*, were captured and released.



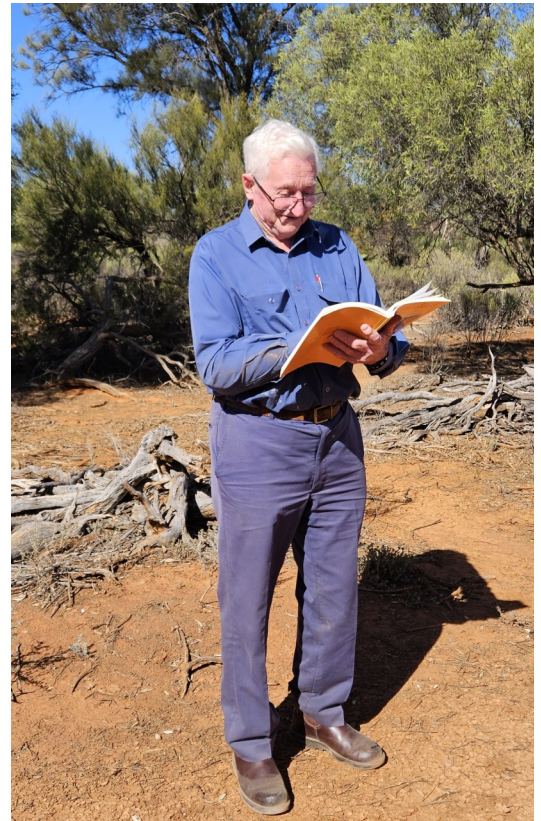
Sandstone Landforms. A small group set out to explore the area where this landform was thought to be, and they found it. Ranger John Rideout (pictured below) gave a talk at dinner that night describing the area.



As mentioned in a previous Newsletter, the area had originally been found by the Gluepot inaugural chairman, John English. It was thanks to his recollection that we are now aware of this interesting landform.

John recently made another visit to Gluepot hoping to find a Desert Mulga that he fondly remembered from years before. Unfortunately, after an afternoon search, this shrub could not be found.

The accompanying photo shows John, scientific book in hand, intent on his wish to find this memorable shrub.



John English

Saturday night Dinner.

Every evening after dinner, the leader of each group gives us a synopsis of their activities for that day.

Saturday evening, however, always has some extra items of interest.

This year, Anne Morphett was presented with a certificate acknowledging her 20 year contribution to Friends of Gluepot.

Anne first became involved with Gluepot as an Assistant Ranger in 2004.

In subsequent years she accepted the role of Ranger and in 2008 she joined the Management committee. While on the committee, she took on the task of organizing the Education Courses as well as carrying out the fox baiting schedule 6 times a year.

Anne has now retired from the Management Committee, but continues to be involved with Gluepot. Her support for Margaret Falkenberg when catering is required has been invaluable. They make a wonderful team.



Anne Morphett



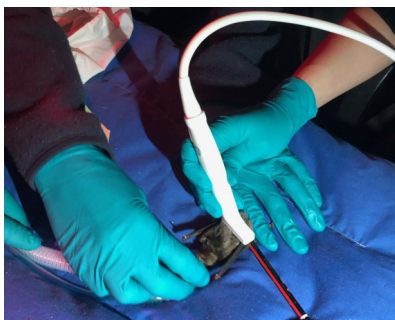
More Saturday night entertainment

After dinner, we also enjoyed 2 very interesting talks.

Dennis Matthews told us about all the work that is done to monitor the approximately 30,000 long-fingered bats that inhabit the caves around Naracoorte. Much has been learned using up to date technology with cameras in the cave, trackers attached to the bats and even using ultrasound to detect pregnancy. The bats have been shown to travel over 100Km a night searching for food. The trackers help researchers to understand the bat movements around the SE of South Australia. We now know the adult females take the young bats on a tour to show them the other caves and most likely where the food resources are.



Dennis Matthews



Attaching a tracker



Bat with tracker attached

Chris Grant talked about his time in Jordan when he was involved with a conservation programme to reintroduce the Arabian Oryx, *Oryx leucoryx*, to that country. The Oryx, a native to the Arabian Peninsula, had previously become extinct in the wild as a result of excessive hunting.

Chris stayed at the Bedouin village of Wadi Rum. A large enclosed area was put aside for these animals in Wadi Rumman, the adjacent valley.

Every effort was made to ensure the animals were fed properly, treated for parasitic infections and protected from predators and poachers. The status of the Oryx in Jordan has been upgraded from extinct to vulnerable.



Chris Grant



Oryx leucoryx



Wadi Rumman

[illegible]

Behind the scenes.

Many Gluepot volunteers put in hours of work helping to keep up the excellent standard of management at Gluepot and to make sure that everything runs efficiently. In this edition we acknowledge the painstaking work done by Margaret Evans.

Margaret has been gradually reforming and improving the way that data is stored on the Research computer. This has involved looking at all the entries from past years, trying to eliminate duplication and devising a workable and easy to understand filing system.

No easy task. Thank you Margaret for your tireless work.



*Margaret at work in the
Gluepot Office.*

Birds at Gluepot. We plan to reserve a spot in each Newsletter for recent interesting bird images. These photographs may be taken from the stealth cameras that are installed at each bird hide, or photos that have been taken by birdwatchers. The stealth cameras are checked every 6 weeks by Rod Bradtke and Tim Pascoe, who then check through all the footage.



3 Sparrowhawks



Pied Honeyeater



Raven with lizard



Standoff - Ravens and Hawk



Apostle birds



Cat

[illegible]

Update on Gluepot Reserve Communications Systems

Over recent years significant improvements have been made to the communications technology in use at Gluepot. These have not only been of benefit to the volunteer staff, but also to day visitors and campers.

Radio Repeater

A new UHF radio repeater system was installed in mid-2023 on the existing mast and replaces the faulty repeater.

This allows communication over most of the property using a UHF CB radio set to channel 1.

Mobile Phone

A 4G mobile booster was installed in the Homestead Office mid-2024 prior to the 3G network closure.

This provides volunteer staff with direct mobile phone access to the Telstra 4G mobile network within a limited-service area at the Homestead.

Satellite Internet

A Starlink satellite internet service was installed in late 2024 and replaces existing satellite internet service.

This provides high speed internet near the Homestead Office area, improving service for volunteer staff, including improved video conferencing facility.

WiFi Network

A new WiFi network was installed around the Homestead area in late 2024, extending WiFi internet to the Visitor Centre and the Education Centre, and improving WiFi services to the volunteer's kitchen. WiFi calling is now possible in these locations.

The network allows WiFi internet access for meetings and educational courses in the Education Centre and future point of sale service for payment of visitor fees and merchandise in the Visitors Centre.

The new service provides WiFi access for Reserve visitors. It is much appreciated by campers who can now call or email family members & friends or utilise many of the other internet functions.

These improvements have required a lot of work by the volunteer Management Committee over a considerable period and especially by the people who undertook the installation work. Well done to all.

Education Courses

<https://www.trybooking.com/DCEVU>

<https://www.trybooking.com/DCEWA>

<https://www.trybooking.com/DCEWF>

<https://www.trybooking.com/DCEWJ>

<https://www.trybooking.com/DCEXM>

Please refer to Gluepot's website for additional information regarding these Education Courses.

Please email Sue Nettlefold (details below) if you are able to help.

Monday October 13 to Thursday October 16.

Please email Sue Nettlefold if you are able to help.

[illegible]

Many people shared their photographs for this publication.

Thanks go to Anne Sellar, Cheryl Sellar, Andrew Humpage, Sandy Dixon, Diana Gillatt, Chris Grant, Dennis Matthews, Bron Mart, Rod Bradtke, Diana Georg and Barbara Howard for their contributions.

[illegible]

GLUEPOT RESERVE

Gluepot Reserve is a Reserve of Birdlife Australia. ABN: 75 149 124 774

Ranger Contact details: Email: gluepot@gluepot.org Telephone: (08) 8892 8600

Postal address: PO Box 345, Waikerie, SA 5330 Website: www.gluepot.org On Facebook.

Gluepot is a not-for-profit conservation reserve, managed and operated entirely by volunteers.

It is funded through donations and bequests from its supporters, and by grants for capital works and projects.

If you wish to support the Reserve by being a donor or providing a bequest, please contact the Chairman:

Ian Falkenberg E-Mail: hawknest2@bigpond.com Phone: 0428842873

This 'Gluepot' Newsletter is produced as an e-newsletter, and is not available as a printed version.

Contributions, comment, and feedback may be forwarded to the editors—Sue Nettlefold and Bronwyn Mart

Emails:- [jdsnmnett@gmail.com](mailto:jdsmnnett@gmail.com); gibbart@bigpond.com